

# IMPLANT CATALOGUE

## MENTOR<sup>®</sup> BREAST IMPLANTS



In 2002, we completed a plant in Leiden, The Netherlands. At 6,000 square meters, it is one of the largest of its kind in the world. This plant contains an automated breast implant dipping machine, which produces every implant shell in a consistently uniform manner. To meet an ever-increasing demand for our products, plant produces more than 300,000 breast implants a year, distributed to more than 100 nations. At Mentor all our products are made under strict standards of design and testing.





FRONT PAGE FINISHES SHORT

Founded in 1969, Mentor Worldwide LLC is a leading manufacturer and supplier of medical products for the global Aesthetic medicine market and Reconstructive surgery. As the world's leading maker of high-quality breast implants for over 30 years, our experience results in quality products that you can rely on.

Headquartered in Irvine, California, Mentor has manufacturing and research operations in the United States and the Netherlands. In 1995, Mentor became the first breast implant manufacturer to achieve CE-marking for its products.

Mentor has worked closely with surgeons throughout the world to develop innovative products such as MENTOR® CONTOUR PROFILE™ BECKER™ 35 Expander/Breast Implant and the MENTOR® CPG™ Gel Breast Implants.

Mentor's manufacturing capability is exceptional. We have substantial experience in biomaterials and biopolymers manufacturing. At the same time, our regulatory expertise has enabled the Company to bring products to market in the world's most stringently regulated health care environments.

Mentor is a manufacturer with a strong customer focus. Our sales representatives are skilled in technical product issues, enabling them to act as a valuable information

resource. For questions or additional information, please contact your local Mentor branch, Johnson & Johnson office or distributor.

On Jan 23, 2009, Mentor was acquired by Johnson & Johnson, one of the leading providers of suture, mesh, hemostats and other products for a wide range of surgical procedures. By joining forces, we aspire to be the trusted global leader in aesthetic medicine among both consumers and professionals by providing a broad range of innovative, science and clinical-based solutions to maintain, enhance, and restore self-esteem and quality of life. Simply said, our goal is to make life more beautiful.



# MemoryGel™

BREAST IMPLANTS

## A More Evolved Implant

- Strict US and EU manufacturing standards
- Highly compliant shell for ease of placement
- Lifetime product replacement policy
- MENTORPromise Protection Plan, the most comprehensive protection plan available<sup>1</sup>
- Moderate Plus, Xtra Moderate Plus, High, Xtra High and Ultra High projection
- Proprietary silicone gel formula for a natural touch that resembles breast tissue

## About MemoryGel™ Implants

MENTOR® MemoryGel™ Breast Implants feature a proprietary cohesive silicone gel formulation used to fill all MENTOR® Silicone Gel-Filled Breast Implants around the world. By varying the components of the gel, Mentor is able to produce a wide selection of products ranging from very soft to very firm.

## MemoryGel™ Breast Implants

### MemoryGel™ Breast Implants Product Scale

Product Profile	Cohesive I™	Cohesive II™	Cohesive III™
Round Moderate Plus	●	●	
Memory Gel™ Xtra Moderate Plus	●		
Round High	●	●	
Memory Gel™ Xtra High	●		
Round Ultra High	●		
CPG™ Gel Breast Implant			●
Round BECKER™ 25 Expander/ Breast Implant	●		
CONTOUR PROFILE™ BECKER™ Expander/ Breast Implant 35		●	

## All Cohesive, all the time.™

Advanced MemoryGel™ Breast Implants.  
The more evolved implant.



All MENTOR® Silicone Gel-Filled Breast Implants contain gel that is cohesive, safe and aesthetically pleasing’.

### Cohesive I™

The standard cohesive level gel used in Mentor® Breast Implants. This is the softest gel and has been preferred by millions of women worldwide. Products are available textured and smooth Moderate Plus, Xtra Moderate Plus, High, Xtra High and Ultra High projection Gel Breast Implants as well as the MENTOR® Becker™ Expander/Breast Implants.

### Cohesive II™

A slightly firmer gel, for surgeons wanting a firmer feeling implant. This gel is used in textured Moderate Plus, High Profile Gel Breast Implants and MENTOR® Contour Profile™ Becker™ Expander/Breast Implants.

### Cohesive III™

Mentor’s most cohesive gel, providing shape retention with a pleasing level of firmness for optimal aesthetic results. This gel is used in the Mentor® CPG™ Gel Breast Implants.



# PROVEN TEXTURE YOU CAN TRUST



MENTOR® CPG™ Implants are proven to have a low risk of capsular contracture and rotation in primary augmentation patients at 10 years and are covered by the most comprehensive warranty in the market.<sup>2</sup>

	<b>MENTOR®: SILTEX™ Texture<sup>3*</sup></b>	Allergan®: Biocell Texturing <sup>3</sup>
<b>Surface Description</b>	Gentle patterned surface	Aggressive, open-pored surface with cuboid-shape depressions and a stilted edge
<b>Manufacturing Technique</b>	Negative contact imprint off polyurethane texturing foam	Shell is pressed onto bed of finely granular salt: lost salt technique
<b>Pore Size Width (µm)</b>	70-150	600-800
<b>Pore Size Depth/ Height (µm)</b>	40-100 (height)	100-150 (depth)
<b>Edge(µm)</b>	0	100-150
<b>Distribution</b>	Regular	Irregular
<b>Depression or Nodules</b>	Nodules	Depressions

Not a head to head study. Based on the comparison of key complication rates reported in the 10 year Core Studies for MemoryShape®/ CPG™ Gel Breast Implants, NATRELLE™ 410 TruForm™ 3 Gel Breast Implants.

\*Specification for MemoryGel™ Round Gel implants  
The third-party trademarks used herein are trademarks of their respective owners.

# PROVEN PERFORMANCE

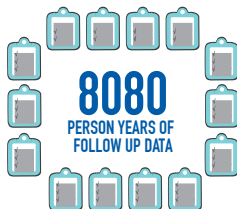
Reliable implants continuously delivering world class clinical results.

The lowest reported risk of key complications in primary breast augmentation for MENTOR® CPG™ Gel Breast Implants at 10 years<sup>2</sup>

Primary Augmentation	MENTOR®CPG Breast Implant Core Study, Long Term 10 years <sup>4</sup>	Allergan® Natrelle® Breast Implant Core Study, Long Term 10 years <sup>5,6</sup>
Capsular Contracture (Baker III/IV)	3.6%	9.2%
Suspected or Confirmed Rupture (MRI Cohort)	6.6%	17.7%
Device Removal (with or without replacement)	9.2%	19.6%
Rotation	1.3%	4.7%

Kaplan-Meier estimated risk of first occurrence. Data presented in table is not based on a head to head comparison of the Mentor® CPG™ Gel Breast Implant and the Allergan® Natrelle® 410 Breast Implant Core Studies.

## Multi-center Core Study



# PROVEN PEACE of MIND

To our Mentor customers and patients, we pledge our commitment to excellence. That is why we back our MemoryGel™ Breast Implants with the most comprehensive plan in the industry.

## Mentor Warranties & Product Replacement Policy

### | MENTOR Promise

#### MENTOR Promise Protection Plan Overview



**FREE AND AUTOMATIC**  
ENROLLMENT



**FREE PRODUCT REPLACEMENT**  
IN THE EVENTS OF CAPSULAR  
CONTRACTURE (Baker III/IV),  
DOUBLE CAPSULE AND LATE  
STAGE SEROMA<sup>B</sup>



**FREE LIFETIME PRODUCT**  
REPLACEMENT FOR  
RUPTURE<sup>A</sup>



**FREE CONTRALATERAL**  
IMPLANT at your surgeon's  
request



**UP TO €1000 FINANCIAL**  
ASSISTANCE COVERAGE  
FOR RUPTURE<sup>A</sup>

For further information about MENTOR® CPG™ Breast Implants or any other MENTOR® Products, talk to your Mentor sales representative today or visit [mentorwwllc.eu](http://mentorwwllc.eu)

<sup>A</sup> In the event of a confirmed rupture or deflation (leaking) of any MENTOR® Breast Implant due to wear or delamination requiring surgical intervention, regardless of the age of the implant, Mentor will provide a free replacement of a MENTOR® Breast Implant of any size in the same or similar style as the originally implanted product.

<sup>A</sup> When a replacement surgery of a MENTOR® Gel-Filled Breast Implant is required due to confirmed rupture occurs within ten (10) years from the date of implantation, provided that eligibility is proven and confirmed by Mentor based on its assessment and evaluation, Mentor will pay uninsured, out-of-pocket costs for operating room, anesthesia and/or surgical expenses directly related to revision surgery up to a maximum aggregate amount of €1000. Operating room and anesthesia charges shall be given payment priority. In such cases, the request for financial assistance under the Mentor Promise Protection Plan must be made to your surgeon. Financial assistance does not imply a loan to you.

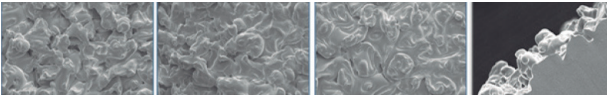
<sup>B</sup> In the events of capsular contracture (Baker III/IV), double capsule or late-stage seroma in augmentation surgery of a MENTOR® Gel-Filled Breast Implant, Mentor will provide a replacement of a MENTOR® Gel-Filled Breast Implant, free of charge for the period of ten (10) years from the date of implantation, provided that eligibility is proven and confirmed by Mentor based on its evaluation of explanted product and assessment of all required documentation. Mentor will provide a replacement MENTOR® Product of any size in the same or similar style as the originally implanted product.

SILTEX<sup>™</sup> Texture providing  
you and your patients with  
peace of mind.



### A closer look at MENTOR<sup>®</sup> patented SILTEX<sup>™</sup> Texture

SEM images of SILTEX<sup>™</sup> Texture



Anterior View

Radius View

Posterior View

Cross Section View

Uncover the unique SILTEX<sup>™</sup> Texture of MENTOR<sup>®</sup> CPG<sup>™</sup> Gel  
Breast Implants today. Talk to your Mentor Sales Representative  
or visit [mentorwllc.eu](http://mentorwllc.eu) for more information.



PART OF THE *Johnson & Johnson* FAMILY OF COMPANIES

# RIGHT FROM THE START. MADE TO MATCH

Expansion matters. Texture you can trust.  
Natural shape

Presenting the:

**CPX™4 Breast Tissue Expander and CPG™ Gel Breast Implants**, giving you greater control over the desired shape in two stage breast reconstruction:

1. MENTOR® is the only company to offer a breast tissue expander with proven directional lower pole expansion<sup>7</sup>
2. CPG Implants can help achieve a smooth transition from tissue to implant<sup>8</sup>
3. Unsurpassed Peace of Mind



# CPX™4 Breast Tissue Expander

Post operatively adjustable device

## PATIENT COMFORT

Incorporates two principle innovations that were designed to enhance patient comfort while maintaining the same expansion profile<sup>9</sup>

## EASY TO DETECT

The **CENTERSCOPE® Magnetic Detection Device** locates the magnetic injection dome for absolute ease and accuracy. The injection dome contains a rare earth magnet that is 48% stronger than previous expanders<sup>9</sup>

## TEXTURED SURFACE

The patented **SILTEX™** Texture has a surface substantially free of pores and interstices

The manufacturing process for the **SILTEX™** Texture on **MENTOR®** Breast Tissue Expanders does not require the use of salt or sugar crystals.

## NATURAL SHAPE

The Combination of the **Buffer-Zone™ Self-Sealing Patch** and the posterior **Dacron® Patch** provides directionally focused expansion to maximize lower pole expansion to mimic the shape of a natural breast<sup>†</sup>



<sup>†</sup> The third-party trademarks used herein are trademarks of their respective owners

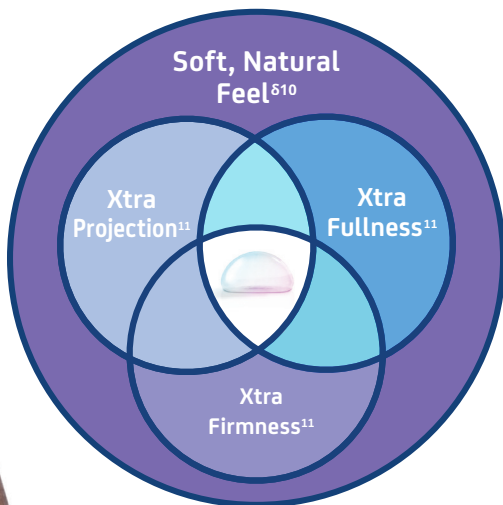
FRONT PAGE FINISHES SHORT





# MENTOR® MemoryGel™ Xtra Breast Implants

She's confident in what she wants - An innovation in breast implants from the brand you trust.



<sup>5</sup> In-person consumer survey with 452 respondents.



## Round

---

Siltex™ Round Breast Implants, Cohesive I™

Smooth Round Breast Implants, Cohesive I™

Siltex™ and Smooth MemoryGel™ Xtra Breast Implants

Siltex™ Round Breast Implants, Cohesive II™

## CPG

---

CPG™ Gel Breast Implants, Cohesive III™

## Expanders

---

CONTOUR PROFILE™ Tissue Expanders

BECKER™ Expander/Breast Implants

Other Expanders

Accessories

## Other

---

Saline products

Sizers

# Round Gel Breast Implants, Cohesive I™

Round

## SILTEX™ Round Breast Implants, Moderate Plus Profile, Cohesive I™



Vol cc	Diameter cm	Proj cm	Catalog #	Resterilizable Gel Sizer <sup>€</sup>
100	8,1	2,7	354-1001	
125	8,8	2,9	354-1251	RSZ-1251
150	9,4	3,0	354-1501	RSZ-1501
175	10,0	3,2	354-1751	RSZ-1751
200	10,5	3,3	354-2001	RSZ-2001
225	10,9	3,5	354-2251	RSZ-2251
250	11,3	3,6	354-2501	RSZ-2501
275	11,7	3,7	354-2751	RSZ-2751
300	12,0	3,7	354-3001	RSZ-3001
325	12,3	3,8	354-3251	RSZ-3251
350	12,6	3,8	354-3501	RSZ-3501
375	12,9	3,9	354-3751	RSZ-3751
400	13,2	4,0	354-4001	RSZ-4001
450	13,7	4,1	354-4501	RSZ-4501
500	14,1	4,2	354-5001	RSZ-5001
550	14,4	4,4	354-5501	RSZ-5501
600	14,7	4,5	354-6001	RSZ-6001
700	15,7	4,8	354-7001	RSZ-7001
800	16,6	5,0	354-8001	RSZ-8001

<sup>€</sup> Resterilizable up to 10 times.

SILTEX™ Round Breast Implants,  
High Profile, Cohesive I™



Vol cc	Diameter cm	Proj cm	Catalog #	Resterilizable Gel Sizer <sup>ε</sup>
125	8,4	3,6	354-4125	RSZ-1254
150	8,9	3,8	354-4150	RSZ-1504
175	9,4	4,0	354-4175	RSZ-1754
200	9,9	4,1	354-4200	RSZ-2004
225	10,2	4,3	354-4225	RSZ-2254
250	10,5	4,5	354-4250	RSZ-2504
275	10,9	4,6	354-4275	RSZ-2754
300	11,1	4,7	354-4300	RSZ-3004
325	11,5	4,8	354-4325	RSZ-3254
350	11,7	4,9	354-4350	RSZ-3504
375	12,0	5,0	354-4375	RSZ-3754
400	12,3	5,1	354-4400	RSZ-4004
425	12,5	5,2	354-4425	RSZ-4254
450	12,7	5,2	354-4450	RSZ-4504
500	13,2	5,4	354-4500	RSZ-5004
550	13,5	5,6	354-4550	RSZ-5504
600	14,0	5,7	354-4600	RSZ-6004
650	14,3	5,8	354-4650	RSZ-6504
700	14,7	6,0	354-4700	RSZ-7004
800	15,4	6,3	354-4800	RSZ-8004

<sup>ε</sup> Resterilizable up to 10 times.

# Round Gel Breast Implants, Cohesive I™

Round

## SILTEX™ Round Breast Implants, Ultra High Profile, Cohesive I™



Vol cc	Diameter cm	Proj cm	Catalog #	Resterilizable Gel Sizer <sup>€</sup>
135	8,0	4,3	354-5135	RSZ-5135
160	8,4	4,5	354-5160	RSZ-5160
185	8,6	4,6	354-5185	RSZ-5185
215	8,9	4,7	354-5215	RSZ-5215
240	9,2	4,9	354-5240	RSZ-5240
270	9,5	5,0	354-5270	RSZ-5270
295	9,9	5,2	354-5295	RSZ-5295
320	10,0	5,3	354-5320	RSZ-5320
350	10,3	5,4	354-5350	RSZ-5350
375	10,5	5,5	354-5375	RSZ-5375
400	10,8	5,6	354-5400	RSZ-5400
430	11,1	5,8	354-5430	RSZ-5430
455	11,3	5,9	354-5455	RSZ-5455
480	11,6	6,0	354-5480	RSZ-5480
535	12,1	6,3	354-5535	RSZ-5535
590	12,6	6,5	354-5590	RSZ-5590

<sup>€</sup> Resterilizable up to 10 times.



# Round Gel Breast Implants, Cohesive I™

Round

## Smooth Round Breast Implants, Moderate Plus Profile, Cohesive I™



Vol cc	Diameter cm	Proj cm	Catalog #	Resterilizable Gel Sizer <sup>€</sup>
125	8,9	2,8	350-1251 BC	RSZ-1251
150	9,5	2,9	350-1501 BC	RSZ-1501
175	10,0	3,1	350-1751 BC	RSZ-1751
200	10,5	3,2	350-2001 BC	RSZ-2001
225	10,9	3,3	350-2251 BC	RSZ-2251
250	11,3	3,4	350-2501 BC	RSZ-2501
275	11,7	3,5	350-2751 BC	RSZ-2751
300	12,0	3,6	350-3001 BC	RSZ-3001
325	12,3	3,8	350-3251 BC	RSZ-3251
350	12,5	3,9	350-3501 BC	RSZ-3501
375	12,8	4,0	350-3751 BC	RSZ-3751
400	13,1	4,0	350-4001 BC	RSZ-4001
450	13,6	4,2	350-4501 BC	RSZ-4501
500	14,1	4,3	350-5001 BC	RSZ-5001
550	14,6	4,5	350-5501 BC	RSZ-5501
600	15,0	4,6	350-6001 BC	RSZ-6001
700	15,8	4,9	350-7001 BC	RSZ-7001
800	16,5	5,1	350-8001 BC	RSZ-8001

<sup>€</sup> Resterilizable up to 10 times.



## Smooth Round Breast Implants, High Profile, Cohesive I™



Vol cc	Diameter cm	Proj cm	Catalog #	Resterilizable Gel Sizer <sup>€</sup>
125	8,3	3,5	350-1254 BC	RSZ-1254
150	8,8	3,7	350-1504 BC	RSZ-1504
175	9,3	3,9	350-1754 BC	RSZ-1754
200	9,7	4,0	350-2004 BC	RSZ-2004
225	10,1	4,2	350-2254 BC	RSZ-2254
250	10,5	4,3	350-2504 BC	RSZ-2504
275	10,8	4,4	350-2754 BC	RSZ-2754
300	11,1	4,5	350-3004 BC	RSZ-3004
325	11,4	4,6	350-3254 BC	RSZ-3254
350	11,7	4,8	350-3504 BC	RSZ-3504
375	12,0	4,8	350-3754 BC	RSZ-3754
400	12,2	5,0	350-4004 BC	RSZ-4004
425	12,5	5,0	350-4254 BC	RSZ-4254
450	12,8	5,1	350-4504 BC	RSZ-4504
500	13,2	5,3	350-5004 BC	RSZ-5004
550	13,6	5,5	350-5504 BC	RSZ-5504
600	14,0	5,6	350-6004 BC	RSZ-6004
650	14,4	5,7	350-6504 BC	RSZ-6504
700	14,8	5,8	350-7004 BC	RSZ-7004
800	15,5	6,0	350-8004 BC	RSZ-8004

<sup>€</sup> Resterilizable up to 10 times.

# Round Gel Breast Implants, Cohesive I™

Round

## Smooth Round Breast Implants, Ultra High Profile, Cohesive I™



Vol cc	Diameter cm	Proj cm	Catalog #	Resterilizable Gel Sizer <sup>€</sup>
135	7,8	4,1	350-5135 BC	RSZ-5135
160	8,2	4,3	350-5160 BC	RSZ-5160
185	8,4	4,4	350-5185 BC	RSZ-5185
215	8,7	4,5	350-5215 BC	RSZ-5215
240	9,0	4,7	350-5240 BC	RSZ-5240
270	9,3	4,8	350-5270 BC	RSZ-5270
295	9,7	5,0	350-5295 BC	RSZ-5295
320	9,8	5,1	350-5320 BC	RSZ-5320
350	10,1	5,2	350-5350 BC	RSZ-5350
375	10,4	5,3	350-5375 BC	RSZ-5375
400	10,6	5,4	350-5400 BC	RSZ-5400
430	10,9	5,6	350-5430 BC	RSZ-5430
455	11,2	5,7	350-5455 BC	RSZ-5455
480	11,4	5,8	350-5480 BC	RSZ-5480
535	12,0	6,1	350-5535 BC	RSZ-5535
590	12,5	6,3	350-5590 BC	RSZ-5590

<sup>€</sup> Resterilizable up to 10 times.



## SILTEX™ Round Moderate Plus Profile Xtra Gel Breast Implants



Vol cc	Diameter cm	Proj cm	Catalog #	Resterilizable Gel Sizer <sup>6</sup>
130	9,1	3,1	TMPX-130	RSZMPX130
160	9,5	3,3	TMPX-160	RSZMPX160
190	10,1	3,5	TMPX-190	RSZMPX190
215	10,5	3,6	TMPX-215	RSZMPX215
240	10,9	3,8	TMPX-240	RSZMPX240
270	11,4	3,9	TMPX-270	RSZMPX270
295	11,6	4,1	TMPX-295	RSZMPX295
325	11,9	4,2	TMPX-325	RSZMPX325
350	12,2	4,3	TMPX-350	RSZMPX350
370	12,7	4,3	TMPX-370	RSZMPX370
405	12,8	4,5	TMPX-405	RSZMPX405
440	13,1	4,8	TMPX-440	RSZMPX440
490	13,6	4,8	TMPX-490	RSZMPX490
545	14,1	5,0	TMPX-545	RSZMPX545
605	14,4	5,3	TMPX-605	RSZMPX605
645	15,0	5,3	TMPX-645	RSZMPX645
755	15,7	5,6	TMPX-755	RSZMPX755

<sup>6</sup> Resterilizable up to 10 times.

## SILTEX™ Round High Profile Xtra Gel Breast Implant



Vol cc	Diameter cm	Proj cm	Catalog #	Resterilizable Gel Sizer <sup>€</sup>
150	8,4	4,2	THPX-150	RSZTHPX150
175	9,0	4,4	THPX-175	RSZTHPX175
200	9,4	4,5	THPX-200	RSZTHPX200
230	9,8	4,8	THPX-230	RSZTHPX230
255	10,1	4,9	THPX-255	RSZTHPX255
285	10,5	5,1	THPX-285	RSZTHPX285
325	10,8	5,4	THPX-325	RSZTHPX325
340	11,1	5,4	THPX-340	RSZTHPX340
365	11,4	5,5	THPX-365	RSZTHPX365
405	11,6	5,9	THPX-405	RSZTHPX405
425	11,9	5,8	THPX-425	RSZTHPX425
455	12,1	6,0	THPX-455	RSZTHPX455
470	12,3	5,9	THPX-470	RSZTHPX470
515	12,6	6,2	THPX-515	RSZTHPX515
570	13,2	6,3	THPX-570	RSZTHPX570
620	13,4	6,5	THPX-620	RSZTHPX620
680	14,0	6,6	THPX-680	RSZTHPX680
725	14,5	6,7	THPX-725	RSZTHPX725
765	14,7	6,7	THPX-765	RSZTHPX765

<sup>€</sup> Resterilizable up to 10 times.

## Smooth Round Moderate Plus Profile Xtra Gel Breast Implant



Vol cc	Diameter cm	Proj cm	Catalog #	Resterilizable Gel Sizer <sup>ε</sup>
130	8,9	3,1	SMPX-130	RSZMPX130
160	9,5	3,3	SMPX-160	RSZMPX160
190	10,0	3,4	SMPX-190	RSZMPX190
215	10,4	3,6	SMPX-215	RSZMPX215
240	10,8	3,7	SMPX-240	RSZMPX240
270	11,4	3,8	SMPX-270	RSZMPX270
295	11,5	4,0	SMPX-295	RSZMPX295
325	11,9	4,1	SMPX-325	RSZMPX325
350	12,3	4,1	SMPX-350	RSZMPX350
370	12,6	4,1	SMPX-370	RSZMPX370
405	12,7	4,4	SMPX-405	RSZMPX405
440	13,1	4,5	SMPX-440	RSZMPX440
490	13,6	4,7	SMPX-490	RSZMPX490
545	14,0	4,9	SMPX-545	RSZMPX545
605	14,5	5,1	SMPX-605	RSZMPX605
645	14,9	5,1	SMPX-645	RSZMPX645
755	15,7	5,4	SMPX-755	RSZMPX755

<sup>ε</sup> Resterilizable up to 10 times.

## Smooth Round High Profile Xtra Gel Breast Implant



Vol cc	Diameter cm	Proj cm	Catalog #	Resterilizable Gel Sizer <sup>€</sup>
150	8,3	4,1	SHPX-150	RSZSHPX150
180	8,8	4,4	SHPX-180	RSZSHPX180
200	9,2	4,5	SHPX-200	RSZSHPX200
235	9,5	4,9	SHPX-235	RSZSHPX235
260	9,9	5,0	SHPX-260	RSZSHPX260
285	10,3	5,0	SHPX-285	RSZSHPX285
335	10,7	5,4	SHPX-335	RSZSHPX335
355	11,0	5,5	SHPX-355	RSZSHPX355
380	11,3	5,5	SHPX-380	RSZSHPX380
415	11,5	5,8	SHPX-415	RSZSHPX415
450	11,9	5,9	SHPX-450	RSZSHPX450
465	12,1	5,8	SHPX-465	RSZSHPX465
490	12,5	5,8	SHPX-490	RSZSHPX490
535	12,7	6,0	SHPX-535	RSZSHPX535
595	13,1	6,3	SHPX-595	RSZSHPX595
650	13,5	6,5	SHPX-650	RSZSHPX650
700	14,1	6,5	SHPX-700	RSZSHPX700
755	14,4	6,7	SHPX-755	RSZSHPX755
790	14,8	6,7	SHPX-790	RSZSHPX790

<sup>€</sup> Resterilizable up to 10 times.

# Round Gel Breast Implants, Cohesive II™

Round

## SILTEX™ Round Breast Implants, Moderate Plus Profile, Cohesive II™



Vol cc	Diameter cm	Proj cm	Catalog #	Resterilizable Gel Sizer <sup>€</sup>
125	8,8	2,9	324-5125	RSZ-1251
150	9,4	3,0	324-5150	RSZ-1501
175	10,0	3,2	324-5175	RSZ-1751
200	10,5	3,3	324-5200	RSZ-2001
225	10,9	3,5	324-5225	RSZ-2251
250	11,3	3,6	324-5250	RSZ-2501
275	11,7	3,7	324-5275	RSZ-2751
300	12,0	3,7	324-5300	RSZ-3001
325	12,3	3,8	324-5325	RSZ-3251
350	12,6	3,8	324-5350	RSZ-3501
375	12,9	3,9	324-5375	RSZ-3751
400	13,2	4,0	324-5400	RSZ-4001
450	13,7	4,1	324-5450	RSZ-4501
500	14,1	4,2	324-5500	RSZ-5001
550	14,4	4,4	324-5550	RSZ-5501
600	14,7	4,5	324-5600	RSZ-6001
700	15,7	4,8	324-5700	RSZ-7001
800	16,6	5,0	324-5800	RSZ-8001

<sup>€</sup> Resterilizable up to 10 times.



## SILTEX™ Round Breast Implants, High Profile, Cohesive II™



Round

Vol cc	Diameter cm	Proj cm	Catalog #	Resterilizable Gel Sizer <sup>€</sup>
125	8,4	3,6	324-4125	RSZ-1254
150	8,9	3,8	324-4150	RSZ-1504
175	9,4	4,0	324-4175	RSZ-1754
200	9,9	4,1	324-4200	RSZ-2004
225	10,2	4,3	324-4225	RSZ-2254
250	10,5	4,5	324-4250	RSZ-2504
275	10,9	4,6	324-4275	RSZ-2754
300	11,1	4,7	324-4300	RSZ-3004
325	11,5	4,8	324-4325	RSZ-3254
350	11,7	4,9	324-4350	RSZ-3504
375	12,0	5,0	324-4375	RSZ-3754
400	12,3	5,1	324-4400	RSZ-4004
425	12,5	5,2	324-4425	RSZ-4254
450	12,7	5,2	324-4450	RSZ-4504
500	13,2	5,4	324-4500	RSZ-5004
550	13,5	5,6	324-4550	RSZ-5504
600	14,0	5,7	324-4600	RSZ-6004
650	14,3	5,8	324-4650	RSZ-6504
700	14,7	6,0	324-4700	RSZ-7004
800	15,4	6,3	324-4800	RSZ-8004

<sup>€</sup> Resterilizable up to 10 times.



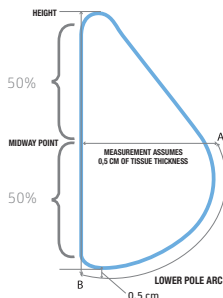
MENTOR® CPG™ BREAST IMPLANT  
NAMING LEGEND

Cohesive Level	Implant Height	Implant Projection
III 3	Tall 3	High 3
	Medium 2	Moderate Plus 2
	Low 1	Moderate 1

KEY: DIGIT 1 = COHESIVE LEVEL  
DIGIT 2 = HEIGHT OF IMPLANT  
DIGIT 3 = PROJECTION OF IMPLANT

UNDERSTANDING THE  
LOWER POLE ARC

**LOWER POLE ARC (LPA) =**  
Length measured along  
the lower pole of the  
implant running from the  
bottom of the implant  
(Point B) upto the mid-  
way point (Point A) including a  
0,5 cm of tissue thickness.



Diagrams not to scale, for reference only.

# CPG™ Gel Breast Implants, Cohesive III™

## CPG™ Implants 331, Cohesive III™, Tall Height, Moderate Projection



Vol cc	Width cm	Height cm	Projection cm	Lower Pole Arc A-B cm	Catalog #	Resterilizable Gel Sizer <sup>€</sup>
125	9,0	9,2	3,2	7,3	334-0903	RSZ-0903
150	9,5	9,7	3,3	7,7	334-0953	RSZ-0953
175	10,0	10,2	3,4	8,1	334-1003	RSZ-1003
200	10,5	10,7	3,5	8,4	334-1053	RSZ-1053
230	11,0	11,3	3,6	8,8	334-1103	RSZ-1103
265	11,5	11,8	3,7	9,1	334-1153	RSZ-1153
300	12,0	12,3	3,9	9,5	334-1203	RSZ-1203
340	12,5	12,8	4,0	9,9	334-1253	RSZ-1253
380	13,0	13,3	4,1	10,2	334-1303	RSZ-1303
425	13,5	13,8	4,3	10,6	334-1353	RSZ-1353
475	14,0	14,3	4,5	11,0	334-1403	RSZ-1403
530	14,5	14,8	4,6	11,3	334-1453	RSZ-1453
585	15,0	15,3	4,8	11,7	334-1503	RSZ-1503
645	15,5	15,9	5,0	12,1	334-1553	RSZ-1553

## CPG™ Implants 321, Cohesive III™, Medium Height, Moderate Projection



Vol cc	Width cm	Height cm	Projection cm	Lower Pole Arc A-B cm	Catalog #	Resterilizable Gel Sizer <sup>€</sup>
120	9,0	8,5	3,3	7,0	354-0908	RSZ-0908
135	9,5	8,9	3,5	7,3	354-0958	RSZ-0958
155	10,0	9,4	3,7	7,7	354-1008	RSZ-1008
180	10,5	9,9	3,8	8,0	354-1058	RSZ-1058
215	11,0	10,3	3,9	8,2	354-1108	RSZ-1108
245	11,5	10,8	4,0	8,6	354-1158	RSZ-1158
280	12,0	11,3	4,2	8,9	354-1208	RSZ-1208
315	12,5	11,8	4,4	9,2	354-1258	RSZ-1258
355	13,0	12,2	4,6	9,6	354-1308	RSZ-1308
395	13,5	12,7	4,7	9,9	354-1358	RSZ-1358
440	14,0	13,2	4,9	10,3	354-1408	RSZ-1408
480	14,5	13,3	5,0	10,5	354-1458	RSZ-1458
530	15,0	14,1	5,2	10,9	354-1508	RSZ-1508
640	16,0	15,0	5,6	11,5	354-1608	RSZ-1608
775	17,0	16,0	5,9	12,2	354-1708	RSZ-1708

<sup>€</sup> Resterilizable up to 10 times.

CPG™ Implants 311, Cohesive III™,  
Low Height, Moderate Projection



Vol cc	Width cm	Height cm	Projection cm	Lower Pole Arc A-B cm	Catalog #	Resterilizable Gel Sizer <sup>€</sup>
120	9,5	8,5	3,2	6,9	334-0951	RSZ-0095
140	10,0	8,9	3,4	7,2	334-1001	RSZ-0100
160	10,5	9,4	3,6	7,5	334-1051	RSZ-0105
180	11,0	9,8	3,7	7,9	334-1101	RSZ-0110
210	11,5	10,3	3,9	8,2	334-1151	RSZ-0115
235	12,0	10,7	4,1	8,5	334-1201	RSZ-0120
270	12,5	11,2	4,2	8,8	334-1251	RSZ-0125
300	13,0	11,6	4,4	9,2	334-1301	RSZ-0130
335	13,5	12,0	4,6	9,5	334-1351	RSZ-0135
375	14,0	12,5	4,7	9,8	334-1401	RSZ-0140
415	14,5	12,9	4,9	10,1	334-1451	RSZ-0145
460	15,0	13,4	5,1	10,5	334-1501	RSZ-0150
510	15,5	13,8	5,2	10,8	334-1551	RSZ-0155
560	16,0	14,3	5,4	11,1	334-1601	RSZ-0160
615	16,5	14,7	5,6	11,4	334-1651	RSZ-0165

<sup>€</sup> Resterilizable up to 10 times.

# CPG™ Gel Breast Implants, Cohesive III™

## CPG™ Implants 332, Cohesive III™, Tall Height, Moderate Plus Projection



Vol cc	Width cm	Height cm	Projection cm	Lower Pole Arc A-B cm	Catalog #	Resterilizable Gel Sizer <sup>€</sup>
145	9,0	9,4	3,8	8,1	334-0909	RSZ-0909
175	9,5	9,9	4,0	8,5	334-0959	RSZ-0959
205	10,0	10,4	4,2	8,9	334-1009	RSZ-1009
235	10,5	10,9	4,4	9,3	334-1059	RSZ-1059
270	11,0	11,5	4,7	9,7	334-1109	RSZ-1109
305	11,5	12,0	4,9	10,1	334-1159	RSZ-1159
350	12,0	12,5	5,1	10,5	334-1209	RSZ-1209
395	12,5	13,0	5,3	10,9	334-1259	RSZ-1259
445	13,0	13,5	5,5	11,3	334-1309	RSZ-1309
495	13,5	14,1	5,7	11,7	334-1359	RSZ-1359
555	14,0	14,6	5,9	12,1	334-1409	RSZ-1409
615	14,5	15,1	6,1	12,6	334-1459	RSZ-1459
680	15,0	15,6	6,3	13,0	334-1509	RSZ-1509

## CPG™ Implants 322, Cohesive III™, Medium Height, Moderate Plus Projection



Vol cc	Width cm	Height cm	Projection cm	Lower Pole Arc A-B cm	Catalog #	Resterilizable Gel Sizer <sup>€</sup>
140	9,0	8,5	3,8	7,6	334-0905	RSZ-0905
165	9,5	8,9	4,0	8,0	334-0955	RSZ-0955
195	10,0	9,4	4,2	8,4	334-1005	RSZ-1005
225	10,5	9,9	4,4	8,8	334-1055	RSZ-1055
255	11,0	10,3	4,7	9,2	334-1105	RSZ-1105
295	11,5	10,8	4,9	9,5	334-1155	RSZ-1155
330	12,0	11,3	5,1	9,9	334-1205	RSZ-1205
375	12,5	11,8	5,3	10,3	334-1255	RSZ-1255
420	13,0	12,2	5,5	10,7	334-1305	RSZ-1305
475	13,5	12,7	5,7	11,1	334-1355	RSZ-1355
525	14,0	13,2	5,9	11,4	334-1405	RSZ-1405
585	14,5	13,6	6,1	11,8	334-1455	RSZ-1455
650	15,0	14,1	6,3	12,2	334-1505	RSZ-1505

<sup>€</sup> Resterilizable up to 10 times.

CPG™ Implants 312, Cohesive III™,  
Low Height, Moderate Plus Projection



Vol cc	Width cm	Height cm	Projection cm	Lower Pole Arc A-B cm	Catalog #	Resterilizable Gel Sizer <sup>€</sup>
125	9,0	8,0	3,8	7,2	334-0907	RSZ-0907
145	9,5	8,4	4,0	7,5	334-0957	RSZ-0957
170	10,0	8,8	4,2	7,9	334-1007	RSZ-1007
195	10,5	9,3	4,4	8,3	334-1057	RSZ-1057
225	11,0	9,7	4,7	8,6	334-1107	RSZ-1107
255	11,5	10,2	4,9	9,0	334-1157	RSZ-1157
290	12,0	10,6	5,1	9,3	334-1207	RSZ-1207
330	12,5	11,1	5,3	9,7	334-1257	RSZ-1257
370	13,0	11,5	5,5	10,0	334-1307	RSZ-1307
415	13,5	11,9	5,7	10,4	334-1357	RSZ-1357
465	14,0	12,4	5,9	10,8	334-1407	RSZ-1407
515	14,5	12,8	6,1	11,1	334-1457	RSZ-1457
570	15,0	13,3	6,3	11,5	334-1507	RSZ-1507
690	16,0	14,2	6,8	12,2	334-1607	RSZ-1607

<sup>€</sup> Resterilizable up to 10 times.

# CPG™ Gel Breast Implants, Cohesive III™

## CPG™ Implants 333, Cohesive III™, Tall Height, High Projection



Vol cc	Width cm	Height cm	Projection cm	Lower Pole Arc A-B cm	Catalog #	Resterilizable Gel Sizer <sup>€</sup>
180	9,0	9,4	4,6	8,4	334-0904	RSZ-4090
215	9,5	9,9	4,8	8,8	334-0954	RSZ-4095
250	10,0	10,4	5,1	9,3	334-1004	RSZ-4100
290	10,5	10,9	5,3	9,7	334-1054	RSZ-4105
330	11,0	11,5	5,6	10,1	334-1104	RSZ-4110
380	11,5	12,0	5,8	10,5	334-1154	RSZ-4115
430	12,0	12,5	6,0	11,0	334-1204	RSZ-4120
485	12,5	13,0	6,2	11,4	334-1254	RSZ-4125
545	13,0	13,5	6,5	11,8	334-1304	RSZ-4130
610	13,5	14,1	6,7	12,2	334-1354	RSZ-4135
680	14,0	14,6	6,9	12,7	334-1404	RSZ-4140
755	14,5	15,1	7,1	13,1	334-1454	RSZ-4145

## CPG™ Implants 323, Cohesive III™, Medium Height, High Projection



Vol cc	Width cm	Height cm	Projection cm	Lower Pole Arc A-B cm	Catalog #	Resterilizable Gel Sizer <sup>€</sup>
165	9,0	8,5	4,6	8,1	334-0902	RSZ-0902
195	9,5	8,9	4,8	8,5	334-0952	RSZ-0952
225	10,0	9,4	5,1	8,9	334-1002	RSZ-1002
260	10,5	9,9	5,3	9,3	334-1052	RSZ-1052
300	11,0	10,3	5,6	9,7	334-1102	RSZ-1102
345	11,5	10,8	5,8	10,1	334-1152	RSZ-1152
390	12,0	11,3	6,0	10,5	334-1202	RSZ-1202
440	12,5	11,8	6,2	10,9	334-1252	RSZ-1252
495	13,0	12,2	6,5	11,3	334-1302	RSZ-1302
555	13,5	12,7	6,7	11,8	334-1352	RSZ-1352
620	14,0	13,2	6,9	12,2	334-1402	RSZ-1402
685	14,5	13,6	7,1	12,6	334-1452	RSZ-1452

<sup>€</sup> Resterilizable up to 10 times.



CPG™ Implants 313, Cohesive III™,  
Low Height, High Projection



Vol cc	Width cm	Height cm	Projection cm	Lower Pole Arc A-B cm	Catalog #	Resterilizable Gel Sizer <sup>€</sup>
130	9,0	8,1	4,4	7,6	334-0906	RSZ-0906
155	9,5	8,6	4,5	7,8	334-0956	RSZ-0956
180	10,0	9,0	4,6	8,3	334-1006	RSZ-1006
210	10,5	9,5	4,8	8,7	334-1056	RSZ-1056
240	11,0	9,9	4,9	9,1	334-1106	RSZ-1106
270	11,5	10,3	5,0	9,5	334-1156	RSZ-1156
310	12,0	10,8	5,2	9,9	334-1206	RSZ-1206
350	12,5	11,2	5,4	10,2	334-1256	RSZ-1256
395	13,0	11,7	5,6	10,6	334-1306	RSZ-1306
440	13,5	12,2	5,8	11,0	334-1356	RSZ-1356
490	14,0	12,6	6,1	11,4	334-1406	RSZ-1406
545	14,5	13,1	6,3	11,7	334-1456	RSZ-1456
605	15,0	13,5	6,6	12,1	334-1506	RSZ-1506

<sup>€</sup> Resterilizable up to 10 times.

# MENTOR® CONTOUR PROFILE™ Breast Tissue Expanders / CPG™ Gel Breast Implants

## Sizing Guide / Two-Stage Breast Reconstruction

### STAGE 1

Selection of the CPX4™ Expander

#### Styles 9100 – Low Height

Volume cc	Width cm	Height cm	Proj. cm	Catalog #
250	11,4	8,1	6,1	354-9121
350	12,7	9,4	6,5	354-9122
450	14,0	10,2	7,1	354-9123
550	15,0	10,9	7,4	354-9124
650	15,7	11,2	7,9	354-9125
750	16,5	11,9	8,1	354-9126

#### Styles 9200 – Medium Height

Volume cc	Width cm	Height cm	Proj. cm	Catalog #
275	10,7	9,3	6,2	354-9221
350	11,7	10,0	6,6	354-9222
450	12,7	10,8	7,0	354-9223
550	13,5	11,7	7,4	354-9224
650	14,6	12,6	7,6	354-9225
800	15,6	13,3	8,0	354-9226

#### CPG™ Implant 311

Cohesive III™, Low Height, Moderate Projection

Volume cc	Width cm	Height cm	Proj. cm	Catalog #
180	11,0	9,8	3,7	334-1101
210	11,5	10,3	3,9	334-1151
270	12,5	11,2	4,2	334-1251
300	13,0	11,6	4,4	334-1301
375	14,0	12,5	4,7	334-1401
460	15,0	13,4	5,1	334-1501
510	15,5	13,8	5,2	334-1551
560	16,0	14,3	5,4	334-1601
615	16,5	14,7	5,6	334-1651

#### CPG™ Implant 311

Cohesive III™, Low Height, Moderate Projection

Volume cc	Width cm	Height cm	Proj. cm	Catalog #
160	10,5	9,4	3,6	334-1051
180	11,0	9,8	3,7	334-1101
210	11,5	10,3	3,9	334-1151
235	12,0	10,7	4,1	334-1201
270	12,5	11,2	4,2	334-1251
300	13,0	11,6	4,4	334-1301
335	13,5	12,0	4,6	334-1351
415	14,5	12,9	4,9	334-1451
460	15,0	13,4	5,1	334-1501
510	15,5	13,8	5,2	334-1551
560	16,0	14,3	5,4	334-1601

\*PLEASE NOTE: The CONTOUR PROFILE™ Tissue Expander Injection Dome is not MRI compatible. For detailed indications, contraindications, warning and precautions associated with the use of this device, please refer to the Product Insert Data Sheet. Individual implant dimensions may vary slightly in products of this type. Not all units conform exactly to the dimensions noted.

## STAGE 2

Selection of CPG™ Gel Breast Implant to use as a long-term implant after expansion is complete.

### CPG™ Implant 312

Cohesive III™, Low Height, Moderate Plus Projection

Volume cc	Width cm	Height cm	Proj. cm	Catalog #
225	11,0	9,7	4,7	334-1107
255	11,5	10,2	4,9	334-1157
330	12,5	11,1	5,3	334-1257
370	13,0	11,5	5,5	334-1307
465	14,0	12,4	5,9	334-1407
570	15,0	13,3	6,3	334-1507
690	16,0	14,2	6,8	334-1607

### CPG™ Implant 313

Cohesive III™, Low Height, High Projection

Volume cc	Width cm	Height cm	Proj. cm	Catalog #
240	11,0	9,9	4,9	334-1106
270	11,5	10,3	5,0	334-1156
350	12,5	11,2	5,4	334-1256
395	13,0	11,7	5,6	334-1306
490	14,0	12,6	6,1	334-1406
605	15,0	13,5	6,6	334-1506

### CPG™ Implant 312

Cohesive III™, Low Height, Moderate Plus Projection

Volume cc	Width cm	Height cm	Proj. cm	Catalog #
195	10,5	9,3	4,4	334-1057
225	11,0	9,7	4,7	334-1107
255	11,5	10,2	4,9	334-1157
290	12,0	10,6	5,1	334-1207
330	12,5	11,1	5,3	334-1257
370	13,0	11,5	5,5	334-1307
415	13,5	11,9	5,7	334-1357
515	14,5	12,8	6,1	334-1457
570	15,0	13,3	6,3	334-1507
690	16,0	14,2	6,8	334-1607

### CPG™ Implant 313

Cohesive III™, Low Height, High Projection

Volume cc	Width cm	Height cm	Proj. cm	Catalog #
210	10,5	9,5	4,8	334-1056
240	11,0	9,9	4,9	334-1106
270	11,5	10,3	5,0	334-1156
310	12,0	10,8	5,2	334-1206
350	12,5	11,2	5,4	334-1256
395	13,0	11,7	5,6	334-1306
440	13,5	12,2	5,8	334-1356
545	14,5	13,1	6,3	334-1456
605	15,0	13,5	6,6	334-1506

# MENTOR® CONTOUR PROFILE™ Breast Tissue Expanders / CPG™ Gel Breast Implants

## Sizing Guide / Two-Stage Breast Reconstruction

### STAGE 1

Selection of the CPX4™ Expander

#### Styles 9200 – Medium Height

Volume cc	Width cm	Height cm	Proj. cm	Catalog #
275	10,7	9,3	6,2	354-9221
350	11,7	10,0	6,6	354-9222
450	12,7	10,8	7,0	354-9223
550	13,5	11,7	7,4	354-9224
650	14,6	12,6	7,6	354-9225
800	15,6	13,3	8,0	354-9226

#### Styles 9300 – Tall Height

Volume cc	Width cm	Height cm	Proj. cm	Catalog #
250	10,1	10,7	5,6	354-9321
350	11,3	11,8	6,0	354-9322
450	12,3	12,9	6,5	354-9323
550	13,2	13,8	6,9	354-9324
650	14,0	14,6	7,3	354-9325
750	14,6	15,3	7,6	354-9326
850	15,4	15,9	7,9	354-9327

#### CPG™ Implant 321

Cohesive III™, Medium Height, Moderate Projection

Volume cc	Width cm	Height cm	Proj. cm	Catalog #
180	10,5	9,9	3,8	354-1058
215	11,0	10,3	3,9	354-1108
245	11,5	10,8	4,0	354-1158
280	12,0	11,3	4,2	354-1208
315	12,5	11,8	4,4	354-1258
355	13,0	12,2	4,6	354-1308
395	13,5	12,7	4,7	354-1358
480	14,5	13,6	5,0	354-1458
530	15,0	14,1	5,2	354-1508
640	16,0	15,0	5,6	354-1608

#### CPG™ Implant 331

Cohesive III™, Tall Height, Moderate Projection

Volume cc	Width cm	Height cm	Proj. cm	Catalog #
175	10,0	10,2	3,4	334-1003
200	10,5	10,7	3,5	334-1053
230	11,0	11,3	3,6	334-1103
265	11,5	11,8	3,7	334-1153
300	12,0	12,3	3,9	334-1203
340	12,5	12,8	4,0	334-1253
380	13,0	13,3	4,1	334-1303
425	13,5	13,8	4,3	334-1353
475	14,0	14,3	4,5	334-1403
530	14,5	14,8	4,6	334-1453
585	15,0	15,3	4,8	334-1503
645	15,5	15,9	5,0	334-1553

\*PLEASE NOTE: The CONTOUR PROFILE™ Tissue Expander Injection Dome is not MRI compatible. For detailed indications, contraindications, warning and precautions associated with the use of this device, please refer to the Product Insert Data Sheet. Individual implant dimensions may vary slightly in products of this type. Not all units conform exactly to the dimensions noted.

## STAGE 2

Selection of CPG™ Gel Breast Implant to use as a long-term implant after expansion is complete.

### CPG™ Implant 322

Cohesive III™, Medium Height, Moderate Plus Projection

Volume cc	Width cm	Height cm	Proj. cm	Catalog #
225	10,5	9,9	4,4	334-1055
255	11,0	10,3	4,7	334-1105
295	11,5	10,8	4,9	334-1155
330	12,0	11,3	5,1	334-1205
375	12,5	11,8	5,3	334-1255
420	13,0	12,2	5,5	334-1305
475	13,5	12,7	5,7	334-1355
585	14,5	13,6	6,1	334-1455
650	15,0	14,1	6,3	334-1505

### CPG™ Implant 323

Cohesive III™, Medium Height, High Projection

Volume cc	Width cm	Height cm	Proj. cm	Catalog #
260	10,5	9,9	5,3	334-1052
300	11,0	10,3	5,6	334-1102
345	11,5	10,8	5,8	334-1152
390	12,0	11,3	6,0	334-1202
440	12,5	11,8	6,2	334-1252
495	13,0	12,2	6,5	334-1302
555	13,5	12,7	6,7	334-1352
685	14,5	13,6	7,1	334-1452

### CPG™ Implant 332

Cohesive III™, Tall Height, Moderate Plus Projection

Volume cc	Width cm	Height cm	Proj. cm	Catalog #
205	10,0	10,4	4,2	334-1009
270	11,0	11,5	4,7	334-1109
305	11,5	12,0	4,9	334-1159
350	12,0	12,5	5,1	334-1209
395	12,5	13,0	5,3	334-1259
445	13,0	13,5	5,5	334-1309
495	13,5	14,1	5,7	334-1359
555	14,0	14,6	5,9	334-1409
615	14,5	15,1	6,1	334-1459
680	15,0	15,6	6,3	334-1509

### CPG™ Implant 333

Cohesive III™, Tall Height, High Projection

Volume cc	Width cm	Height cm	Proj. cm	Catalog #
250	10,0	10,4	5,1	334-1004
330	11,0	11,5	5,6	334-1104
380	11,5	12,0	5,8	334-1154
430	12,0	12,5	6,0	334-1204
485	12,5	13,0	6,2	334-1254
545	13,0	13,5	6,5	334-1304
610	13,5	14,1	6,7	334-1354
680	14,0	14,6	6,9	334-1404
755	14,5	15,1	7,1	334-1454



## **BufferZone™ Self-sealing patch and posterior Dacron® Patch.**

- Protecting the chest wall whilst driving lower pole expansion to mimic the shape of the natural breast.

## **Improved stronger magnet.<sup>ζ</sup>**

- Easier to locate injection dome for larger patients.

## **Enhanced smooth, flat injection dome and shell pliability.<sup>ζ</sup>**

- Helps ease insertion and removal through incision.

## **Better more pliant proprietary BufferZone™ Patch.<sup>ζ</sup>**

- Enhanced patient comfort.

## **Patented SILTEX Texture.**

- Prevents the pooling or sequestration of body fluids.

## **Implant matching.**

- Matching range of definitive implants to be used after tissue expansion.



<sup>ζ</sup> Compared with the MENTOR® CPX2™ and CPX3™ Breast Tissue Expanders.

# CONTOUR PROFILE™ Tissue Expanders

## CPX™ 4 Breast Tissue Expander, Low Height, Style 8100<sup>†</sup>



Volume cc	Width cm	Height cm	Projection cm	Catalog #
250	11,4	8,1	6,1	354-8121
350	12,7	9,4	6,5	354-8122
450	14,0	10,2	7,1	354-8123
550	15,0	10,9	7,4	354-8124
650	15,7	11,2	7,9	354-8125
750	16,5	11,9	8,1	354-8126

## CPX™ 4 Breast Tissue Expander, Medium Height, Style 8200<sup>†</sup>



Volume cc	Width cm	Height cm	Projection cm	Catalog #
275	10,7	9,3	6,2	354-8221
350	11,7	10,0	6,6	354-8222
450	12,7	10,8	7,0	354-8223
550	13,5	11,7	7,4	354-8224
650	14,6	12,6	7,6	354-8225
800	15,6	13,3	8,0	354-8226

## CPX™ 4 Breast Tissue Expander, Tall Height, Style 8300<sup>†</sup>



Volume cc	Width cm	Height cm	Projection cm	Catalog #
250	10,1	10,7	5,6	354-8321
350	11,3	11,8	6,0	354-8322
450	12,3	12,9	6,5	354-8323
550	13,2	13,8	6,9	354-8324
650	14,0	14,6	7,3	354-8325
750	14,6	15,3	7,6	354-8326
850	15,4	15,9	7,9	354-8327

<sup>†</sup>Includes CENTERSCOPE™ Magnetic Detection Device  
PLEASE NOTE: Contour Profile™ Tissue Expanders are not MRI compatible  
Note: Individual implant dimensions may vary slightly in products of this type.  
Not all units will conform exactly to the dimensions noted above



**MENTOR® CPX™ 4 Breast Tissue Expander  
with Suture Tabs Low Height, Style 9100<sup>†</sup>**



Volume cc	Width cm	Height cm	Projection cm	Catalog #
250	11,4	8,1	6,1	354-9121
350	12,7	9,4	6,5	354-9122
450	14,0	10,2	7,1	354-9123
550	15,0	10,9	7,4	354-9124
650	15,7	11,2	7,9	354-9125
750	16,5	11,9	8,1	354-9126

**MENTOR® CPX™ 4 Breast Tissue Expander  
with Suture Tabs Medium Height, Style 9200<sup>†</sup>**



Volume cc	Width cm	Height cm	Projection cm	Catalog #
275	10,7	9,3	6,2	354-9221
350	11,7	10,0	6,6	354-9222
450	12,7	10,8	7,0	354-9223
550	13,5	11,7	7,4	354-9224
650	14,6	12,6	7,6	354-9225
800	15,6	13,3	8,0	354-9226

**MENTOR® CPX™ 4 Breast Tissue Expander  
with Suture Tabs Tall Height, Style 9300<sup>†</sup>**



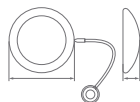
Volume cc	Width cm	Height cm	Projection cm	Catalog #
250	10,1	10,7	5,6	354-9321
350	11,3	11,8	6,0	354-9322
450	12,3	12,9	6,5	354-9323
550	13,2	13,8	6,9	354-9324
650	14,0	14,6	7,3	354-9325
750	14,6	15,3	7,6	354-9326
850	15,4	15,9	7,9	354-9327

<sup>†</sup> Includes CENTERSCOPE™ Magnetic Detection Device  
PLEASE NOTE: Contour Profile™ Tissue Expanders are not MRI compatible  
Note: Individual implant dimensions may vary slightly in products of this type.  
Not all units will conform exactly to the dimensions noted above

# MENTOR® BECKER™ Expander/ Breast Implants

## SILTEX™ ROUND BECKER™ 25 EXPANDER/IMPLANTS, COHESIVE I™

(25% Silicone Gel, Cohesive I™, in outer lumen,  
75% Saline in inner lumen)



Volume cc	Gel Volume cc	TEMPORARY OVEREXPANSION VOLUMES		Total Saline cc	Total Gel- Saline cc	Diameter cm	Proj. cm	Cat.#
		Max Saline cc	Total Gel-Sa- line cc					
150	40	<b>185</b>	<b>225</b>	85-150	125-190	10,7	2,4	354-1500
200	50	<b>250</b>	<b>300</b>	125-200	175-250	11,6	2,7	354-2000
250	60	<b>315</b>	<b>375</b>	165-255	225-315	12,1	3,0	354-2500
300	75	<b>375</b>	<b>450</b>	200-300	275-375	12,9	3,0	354-3000
350	90	<b>435</b>	<b>525</b>	235-350	325-440	14,1	3,0	354-3500
400	100	<b>500</b>	<b>600</b>	275-400	375-500	13,9	3,4	354-4000
500	125	<b>625</b>	<b>750</b>	350-500	475-625	14,7	3,7	354-5000
600	150	<b>750</b>	<b>900</b>	425-600	575-750	15,6	4,2	354-6000
700	175	<b>875</b>	<b>1050</b>	500-700	675-875	16,8	4,3	354-7000
800	200	<b>1000</b>	<b>1200</b>	575-800	775-1000	17,2	4,6	354-8000

Note: Individual implant dimensions may vary slightly in products of this type.  
Not all units will conform exactly to the dimensions noted above

**SILTEX™ CONTOUR PROFILE™ BECKER™ 35  
Expander/Implants, Cohesive II™**

(35% Silicone Gel, Cohesive II™, in outer lumen,  
65% Saline in inner lumen)

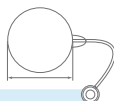


Volume cc	Gel Volume cc	TEMPORARY OVEREXPANSION VOLUMES		Total Saline cc	Total Gel- Saline cc	Width cm	Height cm	Proj. cm	Cat.#
		Max Saline cc	Total Gel- Saline cc						
145	50	120	170	85-95	135-145	9,5	8,3	4,2	324-0955
195	70	155	225	110-125	180-195	10,5	9,1	4,6	324-1055
255	90	205	295	145-165	235-255	11,5	10,0	5,1	324-1155
290	100	235	335	170-190	270-290	12,0	10,5	5,3	324-1205
325	110	270	380	190-215	300-325	12,5	10,9	5,5	324-1255
365	125	300	425	215-240	340-365	13,0	11,3	5,7	324-1305
400	130	335	465	240-270	370-400	13,5	11,8	5,9	324-1355
460	160	375	535	270-300	430-460	14,0	12,2	6,2	324-1405
565	195	460	655	330-370	525-565	15,0	13,1	6,6	324-1505
685	240	555	795	400-445	640-685	16,0	13,9	7,0	324-1605

Note: Individual implant dimensions may vary slightly in products of this type.  
Not all units will conform exactly to the dimensions noted above

## Other Tissue Expanders

### Smooth Round Tissue Expanders



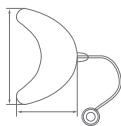
Device Volume cc	Diameter cm	Projection cm	Catalog #
400	11,3	5,9	350-4305M
550	13,4	5,8	350-4307M
700	14,6	6,7	350-4304M
850	15,0	7,2	350-4308M
1000	15,5	7,8	350-4306M

### Smooth Elliptical Tissue Expanders



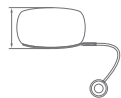
Device Volume cc	Length cm	Width cm	Nominal Projection cm	TEMPORARY OVEREXPANSION		Catalog #
				Proj. cm	Max. Volume cc	
25	6,0	4,0	2,3	4,5	75	350-5301M
50	8,0	5,0	2,5	5,3	150	350-5302M
75	10,0	6,0	2,1	6,0	225	350-5303M
150	12,0	7,0	3,2	7,2	450	350-5304M
250	14,0	8,0	4,5	9,0	750	350-5305M
125	15,0	5,0	3,3	6,5	375	350-5306M

## Smooth Crescent Tissue Expanders



Device Volume cc	Length cm	Width cm	Projection cm	Catalog #
50	9,0	5,7	2,7	350-4312M
100	11,0	6,9	3,7	350-4313M
200	14,6	7,5	4,3	350-4314M
300	16,5	10,3	4,7	350-4315M
400	18,2	11,4	5,2	350-4316M
500	19,6	12,4	5,5	350-4317M

## Smooth Rectangle Tissue Expanders



Device Volume cc	Length cm	Width cm	Projection cm	Catalog #
50	6,9	3,2	3,2	350-4309M
100	6,6	5,1	5,6	350-4301M
250	10,4	7,3	5,6	350-4302M
400	10,6	9,3	6,6	350-4303M
550	13,7	7,1	7,7	350-4310M
700	15,0	8,0	7,9	350-4311M

## Accessories

### Injection Port Detector

Description

Catalog #

CENTERSCOPE™ Magnetic Detection Device

350-4402

### Injection Dome

Description

Catalog #

Dome Pack Set

350-DOMPK

Can be used with SPECTRUM™ Shaped Adjustable Saline Breast Implant, Round BECKER™ Expander/Breast Implant, and Smooth Tissue Expanders



# Saline Breast Implants

## Round Saline Breast Implants

### Smooth Round Breast Implants, Moderate Profile



NOMINAL FILL			MAXIMUM FILL			Catalog #	Sterile Saline Sizer <sup>4</sup>
Volume cc	Diameter cm	Projection cm	Volume cc	Diameter cm	Projection cm		
125	9,5	3,0	150	9,1	3,4	350-1610	351-125SZ
150	10,0	3,1	175	9,6	3,7	350-1615	
175	10,6	3,3	200	10,0	3,9	350-1620	351-175SZ
200	11,0	3,4	225	10,4	3,9	350-1625	
225	11,5	3,5	250	10,9	4,0	350-1630	351-225SZ
250	11,9	3,6	275	11,2	4,1	350-1635	
275	12,3	3,7	300	11,7	4,2	350-1640	351-275SZ
300	12,6	3,7	325	12,1	4,3	350-1645	
325	13,0	3,8	375	12,3	4,5	350-1650	351-325SZ
350	13,3	3,9	400	12,6	4,7	350-1655	
375	13,6	4,0	425	12,8	4,8	350-1660	351-375SZ
425	14,2	4,1	475	13,5	4,9	350-1670	351-425SZ
475	14,8	4,2	525	14,2	4,9	350-1680	351-475SZ
525	15,0	4,2	575	14,5	5,1	350-1685	
575	15,0	4,5	625	14,8	5,1	350-1690	
625	15,2	4,6	700	14,9	5,6	350-1695	
700	15,6	4,9	775	14,9	5,8	350-1697	

<sup>4</sup>Single Use Only

Note: Individual implant dimensions may vary slightly in products of this type.  
Not all units will conform exactly to the dimensions noted above





## Smooth Round Breast Implants, Moderate Plus Profile

NOMINAL FILL			MAXIMUM FILL			Catalog #	Sterile Saline Sizer*
Volume cc	Diameter cm	Projection cm	Volume cc	Diameter cm	Projection cm		
175	9,5	3,5	210	9,3	4,2	350-2175	351-2175SZ
200	10,0	3,7	240	9,7	4,4	350-2200	351-2200SZ
225	10,4	3,8	270	10,1	4,6	350-2225	351-2225SZ
250	10,8	4,0	300	10,5	4,7	350-2250	351-2250SZ
275	11,0	4,1	330	10,8	4,9	350-2275	351-2275SZ
300	11,5	4,3	360	11,2	5,0	350-2300	351-2300SZ
325	11,9	4,4	390	11,5	5,2	350-2325	351-2325SZ
350	12,1	4,5	420	11,7	5,3	350-2350	351-2350SZ
375	12,3	4,6	450	12,0	5,4	350-2375	351-2375SZ
400	12,6	4,7	480	12,3	5,5	350-2400	351-2400SZ
425	12,9	4,8	510	12,5	5,6	350-2425	351-2425SZ
450	13,0	4,9	540	12,8	5,7	350-2450	351-2450SZ
475	13,3	5,0	570	13,0	5,8	350-2475	351-2475SZ
500	13,6	5,1	600	13,2	5,9	350-2500	351-2500SZ
550	14,0	5,3	660	13,7	6,1	350-2550	351-2550SZ
600	14,5	5,5	720	14,1	6,3	350-2600	351-2600SZ
650	14,8	5,6	780	14,4	6,5	350-2650	351-2650SZ
700	15,2	5,8	840	14,8	6,6	350-2700	351-2700SZ
750	15,6	5,9	900	15,1	6,8	350-2750	351-2750SZ
800	16,1	6,0	960	15,5	7,0	350-2800	351-2800SZ

\* Single Use Only

Note: Individual implant dimensions may vary slightly in products of this type.  
Not all units will conform exactly to the dimensions noted above

# Saline Breast Implants

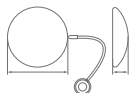
## Smooth Round Breast Implants, High Profile



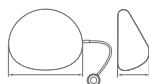
NOMINAL FILL			MAXIMUM FILL			Catalog #	Sterile Saline Sizer <sup>†</sup>
Volume cc	Diameter cm	Projection cm	Volume cc	Diameter cm	Projection cm		
170	9,0	4,0	200	8,8	4,9	350-3170	
190	9,3	4,1	225	9,1	5,1	350-3190	351-3190SZ
210	9,6	4,2	250	9,5	5,3	350-3210	
230	10,0	4,3	275	9,8	5,5	350-3230	351-3230SZ
250	10,2	4,5	300	10,0	5,6	350-3250	
270	10,4	4,6	325	10,2	5,8	350-3270	351-3270SZ
290	10,8	4,7	350	10,5	5,9	350-3290	351-3290SZ
310	11,0	4,8	375	10,7	6,0	350-3310	351-3310SZ
330	11,3	4,8	400	11,0	6,2	350-3330	351-3330SZ
380	11,7	5,2	450	11,4	6,4	350-3380	351-3380SZ
420	12,0	5,4	500	11,7	6,7	350-3420	351-3420SZ
460	12,4	5,5	550	12,1	6,9	350-3460	
500	12,8	5,6	600	12,4	7,1	350-3500	351-3500SZ
560	13,4	5,7	675	13,1	7,3	350-3560	
630	13,8	5,9	750	13,4	7,4	350-3630	351-3630SZ

## SPECTRUM™ Adjustable Saline Breast Implants

## Smooth Round SPECTRUM™ Implants



Temp. Volumecc	Min. Volumecc	NOMINAL FILL			MAXIMUM FILL			Catalog #
		Final Volumecc	Diameter cm	Projection cm	Final Volumecc	Diameter cm	Projection cm	
125	105	125	9,4	2,7	150	9,3	3,2	350-1410
175	150	175	10,3	3,1	210	10,2	3,8	350-1420
225	190	225	10,8	3,5	270	10,9	4,3	350-1430
275	230	275	11,6	3,8	330	11,5	4,6	350-1440
325	275	325	12,4	4,0	390	12,1	4,9	350-1450
375	320	375	13,5	4,1	450	13,0	4,9	350-1460
425	360	425	14,0	4,2	510	13,7	4,8	350-1470
475	405	475	14,3	4,4	570	13,8	5,4	350-1480
525	450	525	15,0	4,4	630	14,4	5,6	350-1485
575	490	575	14,7	4,8	690	14,2	6,0	350-1490

SILTEX™ CONTOUR PROFILE™  
SPECTRUM™ Implants

Temp. Volume cc	Min. Volume cc	NOMINAL FILL				MAXIMUM FILL				Catalog #
		Final Volume cc	Width cm	Height cm	Proj. cm	Final Volume cc	Width cm	Height cm	Proj. cm	
275	235	275	11,5	9,5	5,1	330	11,1	9,4	6,3	354-2511
350	300	350	12,3	10,5	5,3	420	11,9	10,1	6,9	354-2512
450	380	450	13,2	11,0	6,1	540	12,7	11,0	7,5	354-2513
550	470	550	14,0	11,9	6,4	660	13,7	11,9	7,9	354-2514
650	550	650	15,0	12,7	6,6	780	14,5	12,5	8,2	354-2515

# Sterile Resterilizable Gel Breast Implants Sizers<sup>®</sup>

## Round Gel Breast Implant Sizers, Moderate Plus Profile<sup>€</sup>



Volume cc	Diameter cm	Projection cm	Catalog #
125	8,9	2,8	RSZ-1251
150	9,5	2,9	RSZ-1501
175	10,0	3,1	RSZ-1751
200	10,5	3,2	RSZ-2001
225	10,9	3,3	RSZ-2251
250	11,3	3,4	RSZ-2501
275	11,7	3,5	RSZ-2751
300	12,0	3,6	RSZ-3001
325	12,3	3,8	RSZ-3251
350	12,5	3,9	RSZ-3501
375	12,8	4,0	RSZ-3751
400	13,1	4,0	RSZ-4001
450	13,6	4,2	RSZ-4501
500	14,1	4,3	RSZ-5001
550	14,6	4,5	RSZ-5501
600	15,0	4,6	RSZ-6001
700	15,8	4,9	RSZ-7001
800	16,5	5,1	RSZ-8001

<sup>€</sup> Resterilizable up to 10 times.

Note: Individual implant dimensions may vary slightly in products of this type.

Not all units will conform exactly to the dimensions noted above

# Sterile Resterilizable Gel Breast Implants Sizers<sup>€</sup>

## Round Gel Breast Implant Sizers, High Profile



Volume cc	Diameter cm	Projection cm	Catalog #
125	8,3	3,5	RSZ-1254
150	8,8	3,7	RSZ-1504
175	9,3	3,9	RSZ-1754
200	9,7	4,0	RSZ-2004
225	10,1	4,2	RSZ-2254
250	10,5	4,3	RSZ-2504
275	10,8	4,4	RSZ-2754
300	11,1	4,5	RSZ-3004
325	11,4	4,6	RSZ-3254
350	11,7	4,8	RSZ-3504
375	12,0	4,8	RSZ-3754
400	12,2	5,0	RSZ-4004
425	12,5	5,0	RSZ-4254
450	12,8	5,1	RSZ-4504
500	13,2	5,3	RSZ-5004
550	13,6	5,5	RSZ-5504
600	14,0	5,6	RSZ-6004
650	14,4	5,7	RSZ-6504
700	14,8	5,8	RSZ-7004
800	15,5	6,0	RSZ-8004

<sup>€</sup> Resterilizable up to 10 times.

Note: Individual implant dimensions may vary slightly in products of this type.

Not all units will conform exactly to the dimensions noted above

## Round Gel Breast Implant Sizers, Ultra High Profile



Volume cc	Diameter cm	Projection cm	Catalog #
135	7,8	4,1	RSZ-5135
160	8,2	4,3	RSZ-5160
185	8,4	4,4	RSZ-5185
215	8,7	4,5	RSZ-5215
240	9,0	4,7	RSZ-5240
270	9,3	4,8	RSZ-5270
295	9,7	5,0	RSZ-5295
320	9,8	5,1	RSZ-5320
350	10,1	5,2	RSZ-5350
375	10,4	5,3	RSZ-5375
400	10,6	5,4	RSZ-5400
430	10,9	5,6	RSZ-5430
455	11,2	5,7	RSZ-5455
480	11,4	5,8	RSZ-5480
535	12,0	6,1	RSZ-5535
590	12,5	6,3	RSZ-5590

<sup>€</sup> Resterilizable up to 10 times.

Note: Individual implant dimensions may vary slightly in products of this type.

Not all units will conform exactly to the dimensions noted above

# Sterile Resterilizable Gel Breast Implants Sizers<sup>€</sup>

## Round Moderate Plus Profile Xtra Sterile Resterilizable Gel Breast Implant Sizers (for textured implants)



Volume cc	Diameter cm	Projection cm	Catalog #
130	8,9	3,1	RSZMPX130
160	9,5	3,3	RSZMPX160
190	10,0	3,4	RSZMPX190
215	10,4	3,6	RSZMPX215
240	10,8	3,7	RSZMPX240
270	11,4	3,8	RSZMPX270
295	11,5	4,0	RSZMPX295
325	11,9	4,1	RSZMPX325
350	12,3	4,1	RSZMPX350
370	12,6	4,1	RSZMPX370
405	12,7	4,4	RSZMPX405
440	13,1	4,5	RSZMPX440
490	13,6	4,7	RSZMPX490
545	14,0	4,9	RSZMPX545
605	14,5	5,1	RSZMPX605
645	14,9	5,1	RSZMPX645
755	15,7	5,4	RSZMPX755

<sup>€</sup> Resterilizable up to 10 times.

Note: Individual implant dimensions may vary slightly in products of this type. Not all units will conform exactly to the dimensions noted above



## Round Moderate Plus Profile Xtra Sterile Resterilizable Gel Breast Implant Sizers (for smooth implants)



Volume cc	Diameter cm	Projection cm	Catalog #
130	8,9	3,1	RSZMPX130
160	9,5	3,3	RSZMPX160
190	10,0	3,4	RSZMPX190
215	10,4	3,6	RSZMPX215
240	10,8	3,7	RSZMPX240
270	11,4	3,8	RSZMPX270
295	11,5	4,0	RSZMPX295
325	11,9	4,1	RSZMPX325
350	12,3	4,1	RSZMPX350
370	12,6	4,1	RSZMPX370
405	12,7	4,4	RSZMPX405
440	13,1	4,5	RSZMPX440
490	13,6	4,7	RSZMPX490
545	14,0	4,9	RSZMPX545
605	14,5	5,1	RSZMPX605
645	14,9	5,1	RSZMPX645
755	15,7	5,4	RSZMPX755

<sup>€</sup> Resterilizable up to 10 times.

Note: Individual implant dimensions may vary slightly in products of this type. Not all units will conform exactly to the dimensions noted above

# Sterile Resterilizable Gel Breast Implants Sizers<sup>€</sup>

## Round High Profile Xtra Sterile Resterilizable Gel Breast Implant Sizers (for textured implants)



Volume cc	Diameter cm	Projection cm	Catalog #
150	8,3	4,1	RSZTHPX150
180	8,8	4,4	RSZTHPX175
200	9,2	4,5	RSZTHPX200
235	9,5	4,9	RSZTHPX230
260	9,9	5,0	RSZ-HPX255
285	10,3	5,0	RSZ-HPX285
335	10,7	5,4	RSZTHPX325
355	11,0	5,5	RSZTHPX340
380	11,3	5,5	RSZ-HPX365
415	11,5	5,8	RSZTHPX405
450	11,9	5,9	RSZTHPX425
465	12,1	5,8	RSZTHPX455
490	12,5	5,8	RSZTHPX470
535	12,7	6,0	RSZTHPX515
595	13,1	6,3	RSZTHPX570
650	13,5	6,5	RSZTHPX620
700	14,1	6,5	RSZTHPX680
755	14,4	6,7	RSZTHPX725
790	14,8	6,7	RSZTHPX765

<sup>€</sup> Resterilizable up to 10 times.

Note: Individual implant dimensions may vary slightly in products of this type. Not all units will conform exactly to the dimensions noted above

## Round High Profile Xtra Sterile Resterilizable Gel Breast Implant Sizers (for smooth implants)



Volume cc	Diameter cm	Projection cm	Catalog #
150	8,3	4,1	RSZSHPX150
180	8,8	4,4	RSZSHPX180
200	9,2	4,5	RSZSHPX200
235	9,5	4,9	RSZSHPX235
260	9,9	5,0	RSZSHPX260
285	10,3	5,0	RSZSHPX285
335	10,7	5,4	RSZSHPX335
355	11,0	5,5	RSZSHPX355
380	11,3	5,5	RSZSHPX380
415	11,5	5,8	RSZSHPX415
450	11,9	5,9	RSZSHPX450
465	12,1	5,8	RSZSHPX465
490	12,5	5,8	RSZSHPX490
535	12,7	6,0	RSZSHPX535
595	13,1	6,3	RSZSHPX595
650	13,5	6,5	RSZSHPX650
700	14,1	6,5	RSZSHPX700
755	14,4	6,7	RSZSHPX755
790	14,8	6,7	RSZSHPX790

<sup>€</sup> Resterilizable up to 10 times.

Note: Individual implant dimensions may vary slightly in products of this type. Not all units will conform exactly to the dimensions noted above

# Sterile Resterilizable Gel Breast Implants Sizers<sup>€</sup>

## CPG™ GEL BREAST IMPLANT SIZERS

### CPG™ Implant Sizers 331, Cohesive III™, Tall Height, Moderate Projection



Volume cc	Width cm	Height cm	Projection cm	Lower Pole Arc A-B (cm)	Catalog #
125	9,0	9,2	3,2	7,3	RSZ-0903
150	9,5	9,7	3,3	7,7	RSZ-0953
175	10,0	10,2	3,4	8,1	RSZ-1003
200	10,5	10,7	3,5	8,4	RSZ-1053
230	11,0	11,3	3,6	8,8	RSZ-1103
265	11,5	11,8	3,7	9,1	RSZ-1153
300	12,0	12,3	3,9	9,5	RSZ-1203
340	12,5	12,8	4,0	9,9	RSZ-1253
380	13,0	13,3	4,1	10,2	RSZ-1303
425	13,5	13,8	4,3	10,6	RSZ-1353
475	14,0	14,3	4,5	11,0	RSZ-1403
530	14,5	14,8	4,6	11,3	RSZ-1453
585	15,0	15,3	4,0	11,7	RSZ-1503
645	15,5	15,9	5,0	12,1	RSZ-1553

### CPG™ Implant Sizers 321, Cohesive III™, Medium Height, Moderate Projection



Volume cc	Width cm	Height cm	Projection cm	Lower Pole Arc A-B (cm)	Catalog #
120	9,0	8,5	3,3	7,0	RSZ-0908
135	9,5	8,9	3,5	7,3	RSZ-0958
155	10,0	9,4	3,7	7,7	RSZ-1008
180	10,5	9,9	3,8	8,0	RSZ-1058
215	11,0	10,3	3,9	8,2	RSZ-1108
245	11,5	10,8	4,0	8,6	RSZ-1158
280	12,0	11,3	4,2	8,9	RSZ-1208
315	12,5	11,8	4,4	9,2	RSZ-1258
355	13,0	12,2	4,6	9,6	RSZ-1308
395	13,5	12,7	4,7	9,9	RSZ-1358
440	14,0	13,2	4,9	10,3	RSZ-1408
480	14,5	13,6	5,0	10,5	RSZ-1458
530	15,0	14,1	5,2	10,9	RSZ-1508
640	16,0	15,0	5,6	11,5	RSZ-1608
775	17,0	16,0	5,9	12,2	RSZ-1708

<sup>€</sup> Resterilizable up to 10 times.

Note: Individual implant dimensions may vary slightly in products of this type.  
Not all units will conform exactly to the dimensions noted above

# Sterile Resterilizable Gel Breast Implants Sizers<sup>€</sup>

## CPG™ Implant Sizers 311, Cohesive III™, Low Height, Moderate Projection



Volume cc	Width cm	Height cm	Projection cm	Lower Pole Arc A-B (cm)	Catalog #
120	9,5	8,5	3,2	6,9	RSZ-0095
140	10,0	8,9	3,4	7,2	RSZ-0100
160	10,5	9,4	3,6	7,5	RSZ-0105
180	11,0	9,8	3,7	7,9	RSZ-0110
210	11,5	10,3	3,9	8,2	RSZ-0115
235	12,0	10,7	4,1	8,5	RSZ-0120
270	12,5	11,2	4,2	8,8	RSZ-0125
300	13,0	11,6	4,4	9,2	RSZ-0130
335	13,5	12,0	4,6	9,5	RSZ-0135
375	14,0	12,5	4,7	9,8	RSZ-0140
415	14,5	12,9	4,9	10,1	RSZ-0145
460	15,0	13,4	5,1	10,5	RSZ-0150
510	15,5	13,8	5,2	10,8	RSZ-0155
560	16,0	14,3	5,4	11,1	RSZ-0160
615	16,5	14,7	5,6	11,4	RSZ-0165

<sup>€</sup> Resterilizable up to 10 times.

Note: Individual implant dimensions may vary slightly in products of this type.  
Not all units will conform exactly to the dimensions noted above

# Sterile Resterilizable Gel Breast Implants Sizers<sup>ε</sup>

## CPG™ GEL BREAST IMPLANT SIZERS

### CPG™ Implant Sizers 332, Cohesive III™, Tall Height, Moderate Plus Projection



Volume cc	Width cm	Height cm	Projection cm	Lower Pole Arc A-B (cm)	Catalog #
145	9,0	9,4	3,8	8,1	RSZ-0909
175	9,5	9,9	4,0	8,5	RSZ-0959
205	10,0	10,4	4,2	8,9	RSZ-1009
235	10,5	10,9	4,4	9,3	RSZ-1059
270	11,0	11,5	4,7	9,7	RSZ-1109
305	11,5	12,0	4,9	10,1	RSZ-1159
350	12,0	12,5	5,1	10,5	RSZ-1209
395	12,5	13,0	5,3	10,9	RSZ-1259
455	13,0	13,5	5,5	11,3	RSZ-1309
495	13,5	14,1	5,7	11,7	RSZ-1359
555	14,0	14,6	5,9	12,1	RSZ-1409
615	14,5	15,1	6,1	12,6	RSZ-1459
680	15,0	15,6	6,3	13,0	RSZ-1509

### CPG™ Implant Sizers 322, Cohesive III™, Medium Height, Moderate Projection



Volume cc	Width cm	Height cm	Projection cm	Lower Pole Arc A-B (cm)	Catalog #
140	9,0	8,5	3,8	7,6	RSZ-0905
165	9,5	8,9	4,0	8,0	RSZ-0955
195	10,0	9,4	4,2	8,4	RSZ-1005
225	10,5	9,9	4,4	8,8	RSZ-1055
255	11,0	10,3	4,7	9,2	RSZ-1105
295	11,5	10,8	4,9	9,5	RSZ-1155
330	12,0	11,3	5,1	9,9	RSZ-1205
375	12,5	11,8	5,3	10,3	RSZ-1255
420	13,0	12,2	5,5	10,7	RSZ-1305
475	13,5	12,7	5,7	11,1	RSZ-1355
525	14,0	13,2	5,9	11,4	RSZ-1405
585	14,5	13,6	6,1	11,8	RSZ-1455
650	15,0	14,1	6,3	12,2	RSZ-1505

<sup>ε</sup> Resterilizable up to 10 times.

Note: Individual implant dimensions may vary slightly in products of this type.  
Not all units will conform exactly to the dimensions noted above

# Sterile Resterilizable Gel Breast Implants Sizers<sup>€</sup>

## CPG™ Implant Sizers 312, Cohesive III™, Low Height, Moderate Projection



Volume cc	Width cm	Height cm	Projection cm	Lower Pole Arc A-B (cm)	Catalog #
125	9,0	8,0	3,8	7,2	RSZ-0907
145	9,5	8,4	4,0	7,5	RSZ-0957
170	10,0	8,8	4,2	7,9	RSZ-1007
195	10,5	9,3	4,4	8,3	RSZ-1057
225	11,0	9,7	4,7	8,6	RSZ-1107
255	11,5	10,2	4,9	9,0	RSZ-1157
290	12,0	10,6	5,1	9,3	RSZ-1207
330	12,5	11,1	5,3	9,7	RSZ-1257
370	13,0	11,5	5,5	10,0	RSZ-1307
415	13,5	11,9	5,7	10,4	RSZ-1357
465	14,0	12,4	5,9	10,8	RSZ-1407
515	14,5	12,8	6,1	11,1	RSZ-1457
570	15,0	13,3	6,3	11,5	RSZ-1507
690	16,0	14,2	6,8	12,2	RSZ-1607

<sup>€</sup> Resterilizable up to 10 times.

Note: Individual implant dimensions may vary slightly in products of this type.  
Not all units will conform exactly to the dimensions noted above

# Sterile Resterilizable Gel Breast Implants Sizers<sup>ε</sup>

## CPG™ GEL BREAST IMPLANT SIZERS

### CPG™ Implant Sizers 333, Cohesive III™, Tall Height, High Projection



Volume cc	Width cm	Height cm	Projection cm	Lower Pole Arc A-B (cm)	Catalog #
180	9,0	9,4	4,6	8,4	RSZ-4090
215	9,5	9,9	4,8	8,8	RSZ-4095
250	10,0	10,4	5,1	9,3	RSZ-4100
290	10,5	10,9	5,3	9,7	RSZ-4105
330	11,0	11,5	5,6	10,1	RSZ-4110
380	11,5	12,0	5,8	10,5	RSZ-4115
430	12,0	12,5	6,0	11,0	RSZ-4120
485	12,5	13,0	6,2	11,4	RSZ-4125
545	13,0	13,5	6,5	11,8	RSZ-4130
610	13,5	14,1	6,7	12,2	RSZ-4135
680	14,0	14,6	6,9	12,7	RSZ-4140
755	14,5	15,1	7,1	13,1	RSZ-4145

### CPG™ Implant Sizers 323, Cohesive III™, Medium Height, High Projection



Volume cc	Width cm	Height cm	Projection cm	Lower Pole Arc A-B (cm)	Catalog #
165	9,0	8,5	4,6	8,1	RSZ-0902
195	9,5	8,9	4,8	8,5	RSZ-0952
225	10,0	9,4	5,1	8,9	RSZ-1002
260	10,5	9,9	5,3	9,3	RSZ-1052
300	11,0	10,3	5,6	9,7	RSZ-1102
345	11,5	10,8	5,8	10,1	RSZ-1152
390	12,0	11,3	6,0	10,5	RSZ-1202
440	12,5	11,8	6,2	10,9	RSZ-1252
495	13,0	12,2	6,5	11,3	RSZ-1302
555	13,5	12,7	6,7	11,8	RSZ-1352
620	14,0	13,2	6,9	12,2	RSZ-1402
685	14,5	13,6	7,1	12,6	RSZ-1452

<sup>ε</sup> Resterilizable up to 10 times.

Note: Individual implant dimensions may vary slightly in products of this type.  
Not all units will conform exactly to the dimensions noted above



## CPG™ Implant Sizers 313, Cohesive III™, Low Height, High Projection



Volume cc	Width cm	Height cm	Projection cm	Lower Pole Arc A-B (cm)	Catalog #
130	9,0	8,1	4,4	7,6	RSZ-0906
155	9,5	8,6	4,5	7,8	RSZ-0956
180	10,0	9,0	4,6	8,3	RSZ-1006
210	10,5	9,5	4,8	8,7	RSZ-1056
240	11,0	9,9	4,9	9,1	RSZ-1106
270	11,5	10,3	5,0	9,5	RSZ-1156
310	12,0	10,8	5,2	9,9	RSZ-1206
350	12,5	11,2	5,4	10,2	RSZ-1256
395	13,0	11,7	5,6	10,6	RSZ-1306
440	13,5	12,2	5,8	11,0	RSZ-1356
490	14,0	12,6	6,1	11,4	RSZ-1406
545	14,5	13,1	6,3	11,7	RSZ-1456
605	15,0	13,5	6,6	12,1	RSZ-1506

<sup>®</sup> Resterilizable up to 10 times.

Note: Individual implant dimensions may vary slightly in products of this type.  
Not all units will conform exactly to the dimensions noted above

# Sterile Saline Breast Implant Sizers

## Round Saline Breast Implant Sizers, Moderate Profile



NOMINAL FILL			MAXIMUM FILL			Catalog #
Volume cc	Diameter cm	Projection cm	Volume cc	Diameter cm	Projection cm	
125	9,5	3,0	150	9,1	3,4	351-125SZ
175	10,6	3,3	200	10,0	3,9	351-175SZ
225	11,5	3,5	250	10,9	4,0	351-225SZ
275	12,3	3,7	300	11,7	4,2	351-275SZ
325	13,0	3,8	375	12,3	4,5	351-325SZ
375	13,6	4,0	425	12,8	4,8	351-375SZ
425	14,2	4,1	475	13,5	4,9	351-425SZ
475	14,8	4,2	525	14,2	4,9	351-475SZ

## Round Saline Breast Implant Sizers, Moderate Plus Profile



NOMINAL FILL			MAXIMUM FILL			Catalog #
Volume cc	Diameter cm	Projection cm	Volume cc	Diameter cm	Projection cm	
175	9,5	3,5	210	9,3	4,2	351-2175SZ
200	10,0	3,7	240	9,7	4,4	351-2200SZ
225	10,4	3,8	270	10,1	4,6	351-2225SZ
250	10,8	4,0	300	10,5	4,7	351-2250SZ
275	11,0	4,1	330	10,8	4,9	351-2275SZ
300	11,5	4,3	360	11,2	5,0	351-2300SZ
325	11,9	4,4	390	11,5	5,2	351-2325SZ
350	12,1	4,5	420	11,7	5,3	351-2350SZ
375	12,3	4,6	450	12,0	5,4	351-2375SZ
400	12,6	4,7	480	12,3	5,5	351-2400SZ
425	12,9	4,8	510	12,5	5,6	351-2425SZ
450	13,0	4,9	540	12,8	5,7	351-2450SZ
475	13,3	5,0	570	13,0	5,8	351-2475SZ
500	13,6	5,1	600	13,2	5,9	351-2500SZ
550	14,0	5,3	660	13,7	6,1	351-2550SZ
600	14,5	5,5	720	14,1	6,3	351-2600SZ
650	14,8	5,6	780	14,4	6,5	351-2650SZ
700	15,2	5,8	840	14,8	6,6	351-2700SZ
750	15,6	5,9	900	15,1	6,8	351-2750SZ
800	16,1	6,0	960	15,5	7,0	351-2800SZ

## Round Saline Breast Implant Sizers, High Profile



NOMINAL FILL			MAXIMUM FILL			Catalog #
Volume cc	Diameter cm	Projection cm	Volume cc	Diameter cm	Projection cm	
190	9,3	4,1	225	9,1	5,1	351-3190SZ
230	10,0	4,3	275	9,8	5,5	351-3230SZ
270	10,4	4,6	325	10,2	5,8	351-3270SZ
290	10,8	4,7	350	10,5	5,9	351-3290SZ
310	11,0	4,8	375	10,7	6,0	351-3310SZ
330	11,3	4,8	400	11,0	6,2	351-3330SZ
380	11,7	5,2	450	11,4	6,4	351-3380SZ
420	12,0	5,4	500	11,7	6,7	351-3420SZ
500	12,8	5,6	600	12,4	7,1	351-3500SZ
630	13,8	5,9	750	13,4	7,4	351-3630SZ

## CONTOUR PROFILE™ Saline Breast Implant Sizers, High Profile



Volume cc	Width cm	Height cm	Projection cm	Catalog #
275 + 25	11,5	9,5	5,1	351-0711SZ
350 + 50	12,3	10,5	5,3	351-0712SZ
450 + 50	13,2	11,0	6,1	351-0713SZ
550 + 50	14,0	11,9	6,4	351-0714SZ
650 + 75	15,0	12,7	6,6	351-0715SZ

Note: Individual implant dimensions may vary slightly in products of this type.  
Not all units will conform exactly to the dimensions noted above

## References

1. Based on warranty comparisons of the following breast implants:

*Allergan Natrelle*: <http://www.natrelle.co.uk/breast-enhancement/Pages/warranty.aspx>, *EuroSilicone & Nagor*: [http://nagor.com/pdf/Warranty\\_PDF\\_Nagor.pdf](http://nagor.com/pdf/Warranty_PDF_Nagor.pdf), *Arion*: [http://www.laboratoires-arion.com/images/arion/ARION\\_GUARANTEE\\_PROGRAM\\_ANG.pdf](http://www.laboratoires-arion.com/images/arion/ARION_GUARANTEE_PROGRAM_ANG.pdf), *Polytech*: [http://www.polytechhealth.info/images/pdf/loE\\_Information\\_engl\\_2015-01.pdf](http://www.polytechhealth.info/images/pdf/loE_Information_engl_2015-01.pdf), *Motiva*: <https://motivaimplants.com/productwarranty/Sebbin>: Garantie des IMPLANTS MAMMAIRES and La garantie premium, Accessed March 20 2017.

2. Mentor Worldwide, LLC. MemoryShape® Post-Approval Cohort Study (formerly Contour Profile Gel Core Study) Final Clinical Study Report. 02 June 2015 Mentor Worldwide LLC. Data on File. MemoryGel® Core Gel Clinical Study Final Report, April 2013. Maxwell, G. Patrick; Van Natta, Bruce W.; Bengtson, Bradley P; and Murphy, Diane K., «Ten-Year Results From the Natrelle 410 Anatomical Form-Stable Silicone Breast Implant Core Study» (2015). Public Health Resources. Health Canada: Summary Basis of Decision (SBD) for Natrelle™ Highly Cohesive Silicone-Filled Breast Implants. Application No. 88573. License No.72262. Date Issued: 2014/01/17. Health Canada: Summary Basis of Decision (SBD) for Natrelle™ Silicone-Filled Breast Implants-Smooth Shell With Barrier and Narelle™ Silicone Filled Breast Implants - Textured Shell with Barrier Layer. Application No. 61865 and 60524 License No License No 72264 and 72263. Date Issued: 2012/09/25.

3. Danino, A. M., Basmacioglu, P, Saito, S., Roche, F., Blanchet-Bardon, C., Revol, M., & Servant, J. M. (2001). Comparison of the capsular response to the Biocell RTV and Mentor 1600 Siltex breast implant surface texturing: a scanning electron microscopic study. *Plastic and reconstructive surgery*, 108(7), 2047-2052.

4. Mentor Worldwide, LLC. MemoryShape® Post-Approval Cohort Study (formerly Contour Profile Gel Core Study) Final Clinical Study Report. 02 June 2015
5. Health Canada: Summary Basis of Decision (SBD) for Natrelle™ Highly Cohesive Silicone-Filled Breast Implants. Application No. 88573. License No.72262. Date Issued: 2014/01/17.
6. Maxwell, G. Patrick, et al. «Ten-year results from the Natrelle 410 anatomical form-stable silicone breast implant core study.» Aesthetic Surgery Journal 35.2 (2015): 145-155.
7. Hoffman\_CP529\_530Interim\_Report\_for\_CP529\_DOI\_PR\_20131007 (PDF pg. 2)
8. Mentor Worldwide LLC, Data on File, HS820.050331.02F Validation Case Study Report: Market Acceptance of the Contour Profile Gel Product Family - TX.820.081125.01
9. As compared to the CONTOUR PROFILE® Tissue Expanders at 5 mm. Data on file at Mentor Worldwide LLC.
10. Mentor Consumer Preference Market Research Report – July 2017.
11. Product Dimensions for MemoryGel™ and MemoryGel™ Xtra Breast Implants Mentor R&D Benchtop Testing (Pinch Test) - July 2017.

## Important Safety Information

MENTOR® Breast Implants are indicated for breast augmentation, in women who are at least 18 years old, or for breast reconstruction. Breast implant surgery should not be performed in women with active infection anywhere in their body, with existing cancer or pre-cancer of their breast(s) who have not received adequate treatment for those conditions or who are pregnant or nursing.

There are risks associated with breast implant surgery. Breast implants are not lifetime devices and breast implantation is not necessarily a one-time surgery.

The most common complications with MENTOR® MemoryGel™ Breast Implants include re-operation, implant removal, capsular contracture, asymmetry, and breast pain. A lower risk of complication is implant rupture, which is most often silent. The health consequences of a ruptured silicone gel-filled breast implant have not been fully established. Screenings such as mammography, MRI, or ultrasound are recommended after initial implant surgery to assist in detecting implant rupture.

The most common complications with MENTOR® Saline-Filled Implants include re-operation, implant removal, capsular contracture, wrinkling, deflation, asymmetry, and breast pain.

MENTOR® CPX™4 Breast Tissue Expanders can be utilized for breast reconstruction after mastectomy, correction of an underdeveloped breast, scar revision and tissue defect procedures.

These expanders are intended for temporary subcutaneous or submuscular implantation.\*

CONTOUR PROFILE™ Tissue Expanders are devices that contain magnetic injection domes and are NOT MRI compatible. Do not use the CONTOUR PROFILE™ Tissue Expander in patients where an MRI may be needed. DO NOT use the CONTOUR PROFILE™ Tissue Expander in patients that have a previously

implanted device that could be affected by a magnetic field. The device could be moved by the MRI causing pain or displacement, potentially resulting in a revision surgery. The incidence of extrusion of the expander has been shown to increase when the expander has been placed in injured areas: scarred, heavily irradiated or burned tissue, crushed bone areas or where severe surgical reduction of the area has previously been performed.

Your patient needs to be informed and understand the risks and benefits of breast implants, and provided with an opportunity to consult with you prior to deciding on surgery.

For detailed indications, contraindications, warning and precautions associated with the use of all MENTOR® Implantable Devices, please refer to the Product Insert Data Sheet provided with each product, or review the Important Safety Information provided at [www.mentorwllc.eu](http://www.mentorwllc.eu).



PART OF THE *Johnson & Johnson* FAMILY OF COMPANIES



**Mentor Worldwide LLC**

33 Technology Drive Irvine, CA 92618, USA

Tel: +1 8006368678

[www.mentorwwlc.eu](http://www.mentorwwlc.eu)